

Superbly appointed, this is a beautifully presented four bedroom, detached family home offering elegance for any future purchaser. Briefly comprising; entrance hall, cloakroom, lounge, dining room, conservatory, modernised fitted kitchen, upstairs are four bedrooms, master bedroom with en-suite facilities, refitted family bathroom, gas central heating and double glazing compliment the accommodation, driveway, garage and a most delightful enclosed rear garden offering seclusion and privacy.

Entrance Hall:- 5' 8" x 7' 7" (1.73m x 2.31m)

Lounge:- 17' 8" x 125' 8" (5.38m x 38.27m)

Dining Room:- 12' 11" x 10' 11" (3.93m x 3.32m)

Kitchen:- 11' 3" x 9' 5" (3.43m x 2.87m)

Utility Room:- 6' 8" x 5' 6" (2.03m x 1.68m)

Conservatory:- 11' 6" x 11' 4" (3.50m x 3.45m)

Downstairs Cloakroom:- 6' 6" x 3' 2" (1.98m x 0.96m)

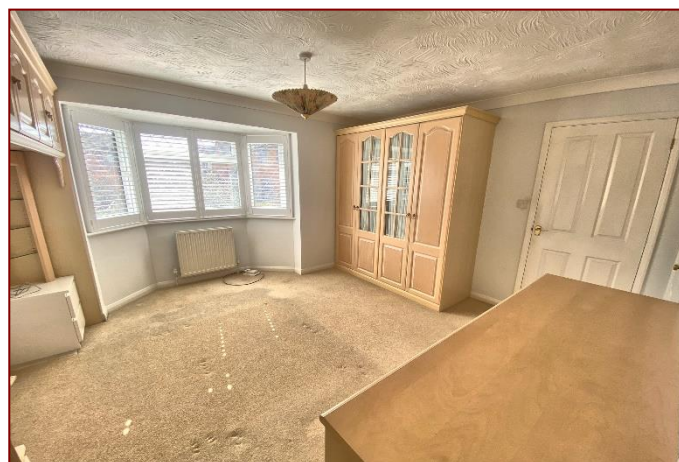
Bedroom 1:- 12' 10" x 12' 8" (3.91m x 3.86m) Maximum Measurements

Bedroom 2:- 12' 8" x 12' 1" (3.86m x 3.68m)

Bedroom 3:- 9' 6" x 8' 6" (2.89m x 2.59m)

Bedroom 4:- 9' 5" x 7' (2.87m x 2.13m)

Bathroom:- 6' 5" x 6' 2" (1.95m x 1.88m)





Score	Energy rating	Current	Potential
92+	A		
81-91	B		81 B
69-80	C	70 C	
55-68	D		
39-54	E		
21-38	F		
1-20	G		

Tenure: Freehold

Council Tax Band:

Disclaimer: These particulars are set out as a general outline in accordance with the Consumer Protection from Unfair Trading Regulations 2008 (CPR's) and Business Protection from Misleading Marketing Regulations 2008 (BPR's) only for the guidance of intending purchasers or lessees, and do not constitute any part of an offer or contract. Details are given without any responsibility, and any intending purchasers, lessees or third parties should not rely on them as statements or representations of fact, but must satisfy themselves by inspection or otherwise as to the correctness of each of them.

We have not carried out a structural survey and the services, appliances and specific fittings have not been tested. All photographs, measurements, floor plans and distances referred to are given as a guide only and should not be relied upon for the purchase of carpets or any other fixtures or fittings. Gardens, roof terraces, balconies and communal gardens as well as tenure and lease details cannot have their accuracy guaranteed for intending purchasers. Lease details, service ground rent (where applicable) are given as a guide only and should be checked and confirmed by your solicitor prior to exchange of contracts.

No person in the employment of Fenwicks Estates Ltd has any authority to make any representation or warranty whatever in relation to this property. Purchase prices, rents or other prices quoted are correct at the date of publication and, unless otherwise stated, exclusive of VAT.

Data Protection: We retain the copyright in all advertising material used to market this Property.

Money Laundering Regulations 2017: Intending purchasers will be required to produce identification documentation once an offer is accepted.



£475,000

St. Sebastian Crescent, Fareham, PO16 7BX

DRAFT DETAILS

Fenwicks

THE INDEPENDENT ESTATE AGENT

Fenwicks - Fareham Office: 01329 285 500 www.fenwicks-estates.co.uk